

CGDI Prog BMW Key programmer F-series Coding Manual

[CGDI Prog BMW MSV80](#) is not only able to program BMW key for CAS1-CAS4+/fem/bdc system and read ISN, but also do F-series coding.

CGDI BMW F-series coding guide:

Select BMW F series coding



Read ECU info

This feature requires network connection

BMW F Series Coding Feature version:0001

VIN: LBV8W3105HMH18553 Car Series: F020

ECU Number	ECU Name	ECU Address
------------	----------	-------------

 Read ECU info

 Backup coding

 Coding

 Restore Coding

This feature requires networking, please ensure that the network is normal
OBD is connecting
OBD KWP-CAN 500kbps connection is successful
Reading data


此功能需要联网 请确保网络通畅 点 读取ECU信息


Select control module


BMW F Series Coding Feature version:0001


VIN: LBV8W3105HMH18553 Car Series: F020

ECU Number	ECU Name	ECU Address
1	FEM GW	10
2	FLE	43
3	FEM_BODY	40
4	EGS	18
5	EMA	4D
6	EPS	30
7	DME BAC3	12
8	ZBE3	67
9	GWS	5E
10	EMA	4E
11	FLE	44
12	FZD	56
13	ICM	1C

 Read ECU info

 Backup coding

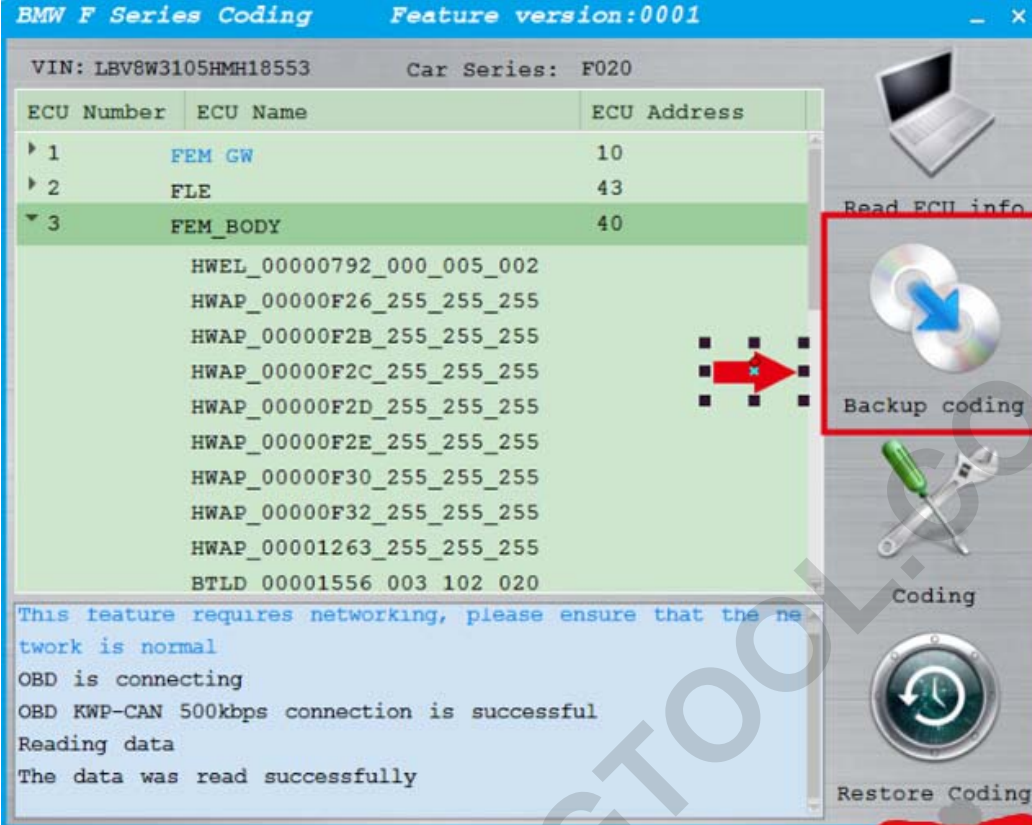
 Coding

 Restore Coding

This feature requires networking, please ensure that the network is normal
OBD is connecting
OBD KWP-CAN 500kbps connection is successful
Reading data
The data was read successfully

读取信息成功后 点击 3. FEM_BODY

Backup coding



The screenshot shows the 'BMW F Series Coding' application window. At the top, it displays 'VIN: LBV8W3105HMH18553' and 'Car Series: F020'. Below this is a table of ECUs:

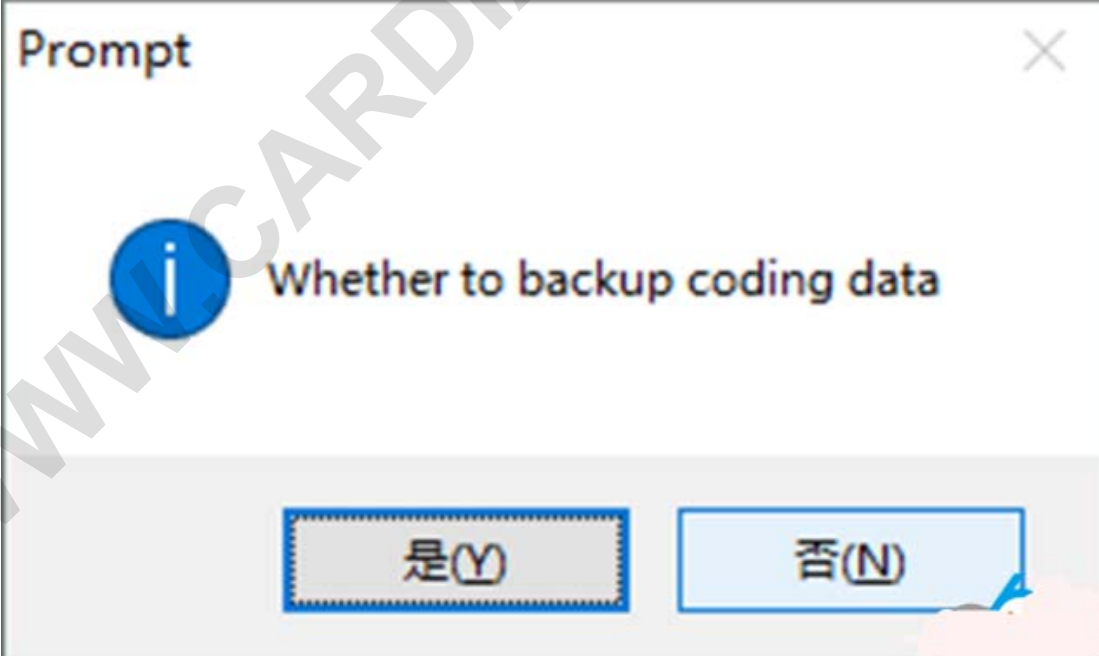
ECU Number	ECU Name	ECU Address
1	FEM_GW	10
2	FLE	43
3	FEM_BODY	40

The 'FEM_BODY' ECU is expanded, showing a list of hardware IDs (HWEL and HWAP) and a BTLD entry. A red arrow points from the 'Backup coding' button on the right to the HWAP entries in the list. The right sidebar contains icons for 'Read ECU info', 'Backup coding', 'Coding', and 'Restore Coding'. A status window at the bottom left shows the following text:

```
This feature requires networking, please ensure that the network is normal
OBd is connecting
OBd KWP-CAN 500kbps connection is successful
Reading data
The data was read successfully
```

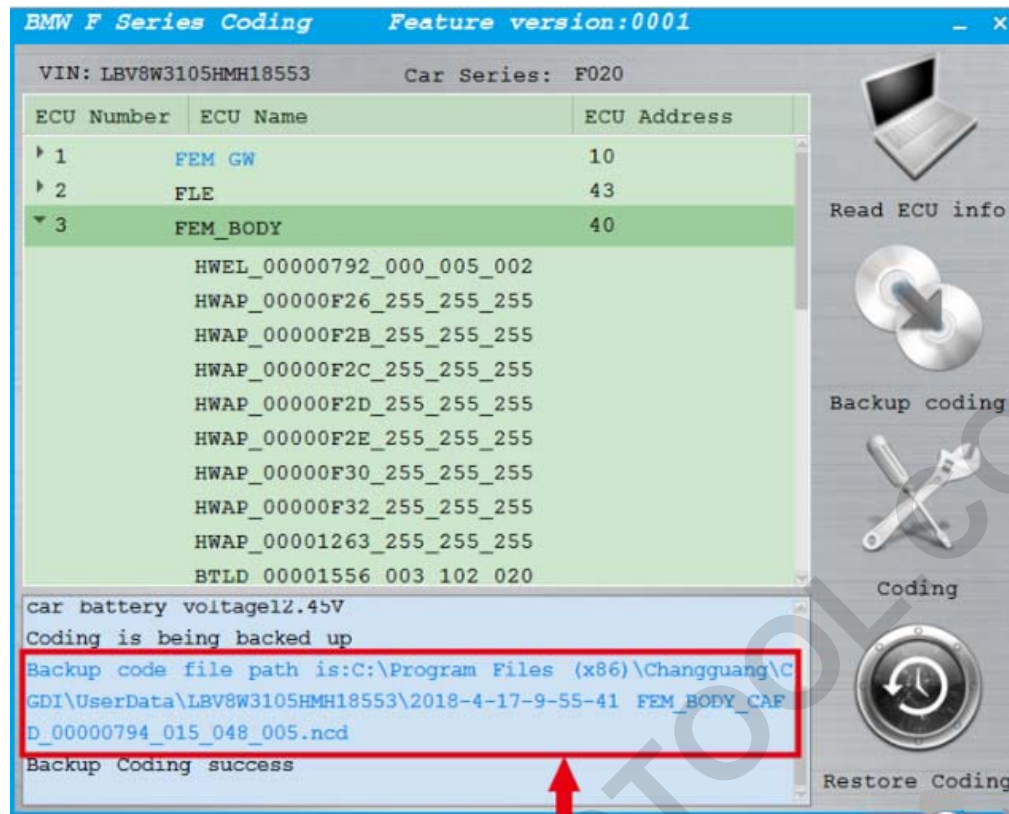
At the bottom of the screenshot, a red banner contains the Chinese text: 点击 备份设码

Confirm backup coding data



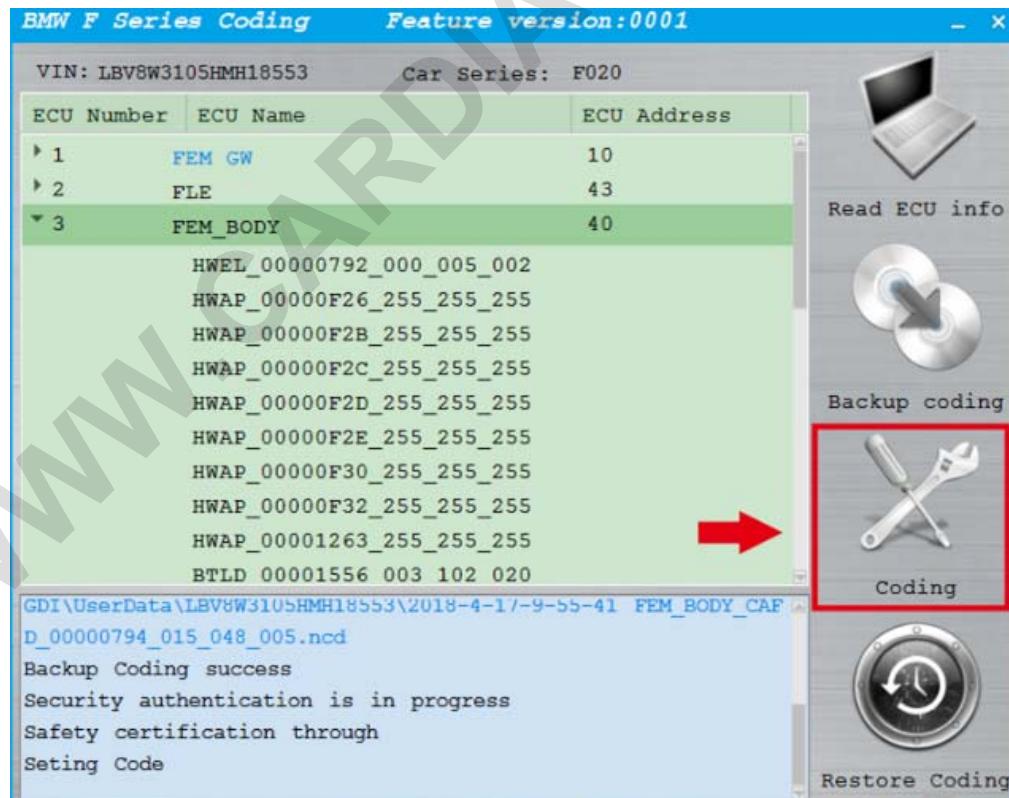
The screenshot shows a 'Prompt' dialog box with a blue information icon and the text: 'Whether to backup coding data'. At the bottom, there are two buttons: '是(Y)' (Yes) and '否(N)' (No). A hand cursor is pointing at the '否(N)' button.

CGDI BMW backup coding success



设码 备份成功 此为文件保存路径

Select Coding



点击设码

Coding success

BMW F Series Coding Feature version:0001

VIN: LBV8W3105HMH18553 Car Series: F020

ECU Number	ECU Name	ECU Address
1	FEM_GW	10
2	FLE	43
3	FEM_BODY	40

HWEL_00000792_000_005_002
HWAP_00000F26_255_255_255
HWAP_00000F2B_255_255_255
HWAP_00000F2C_255_255_255
HWAP_00000F2D_255_255_255
HWAP_00000F2E_255_255_255
HWAP_00000F30_255_255_255
HWAP_00000F32_255_255_255
HWAP_00001263_255_255_255
BTLD 00001556 003 102 020

D_00000794_015_048_005.ncd
Backup Coding success
Security authentication is in progress
Safety certification through
Setting Code
Coding is successful

Read ECU info
Backup coding
Coding
Restore Coding

设码成功

WWW.CARDIAGTOOL.CO.UK