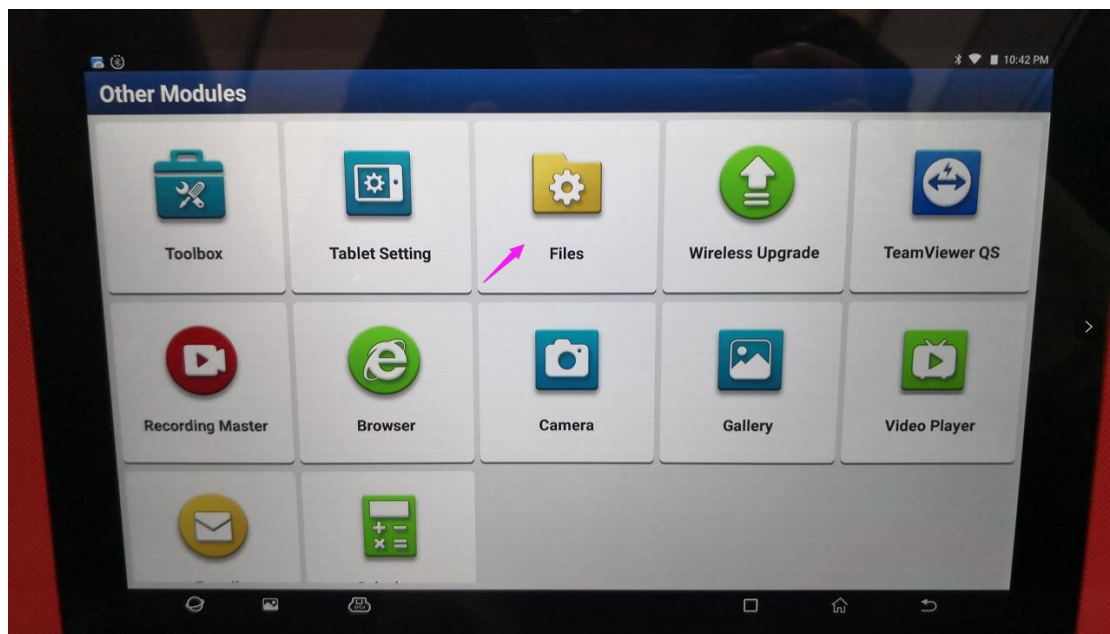
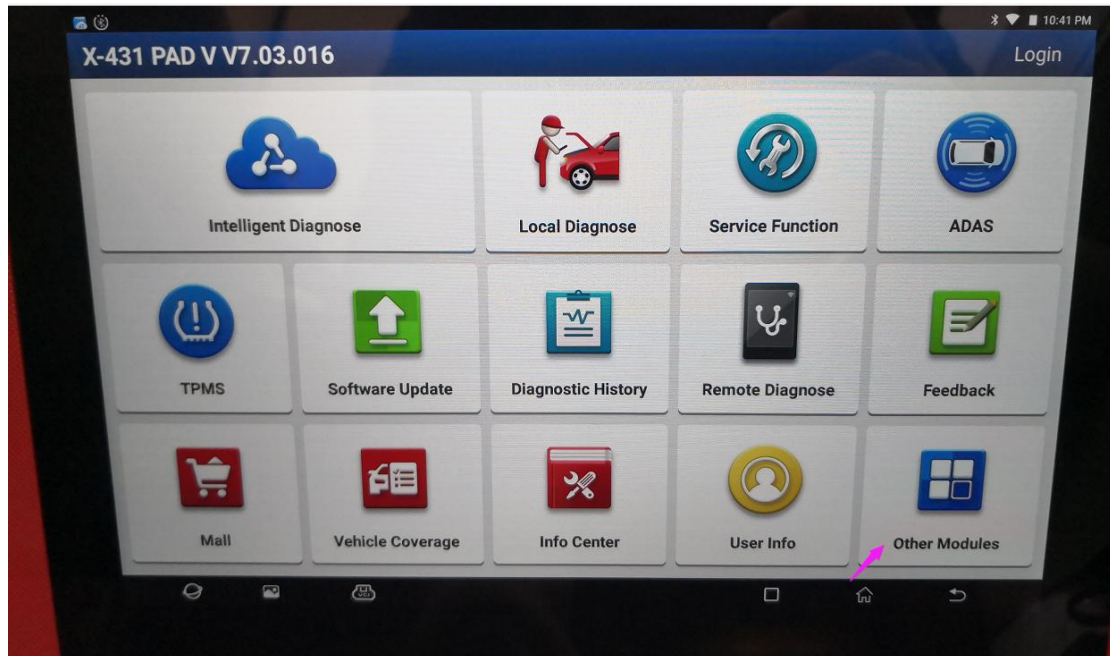
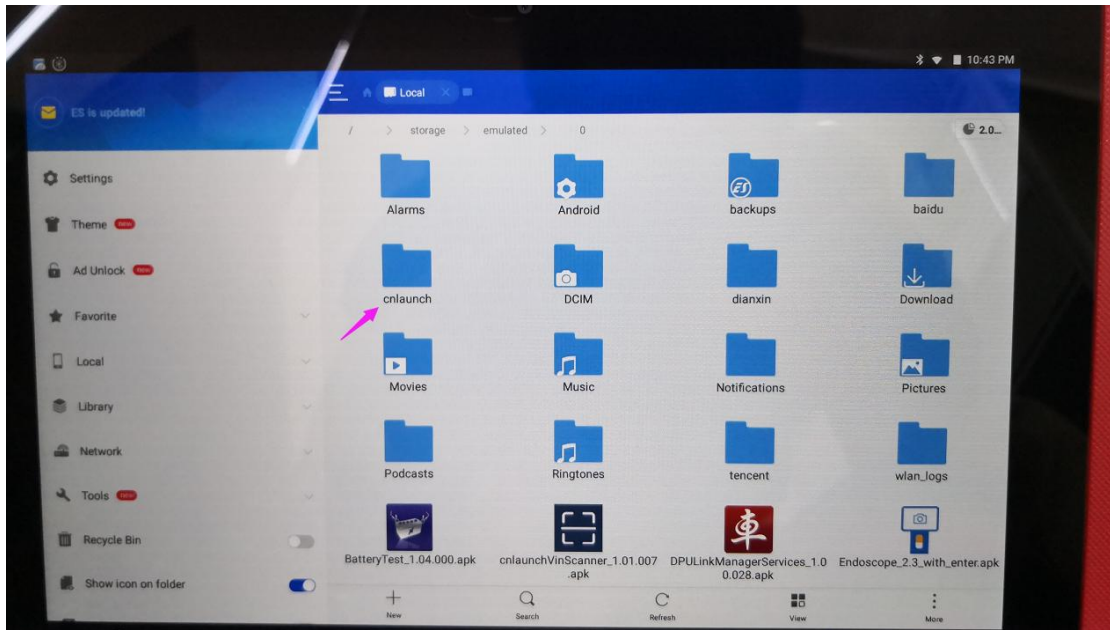
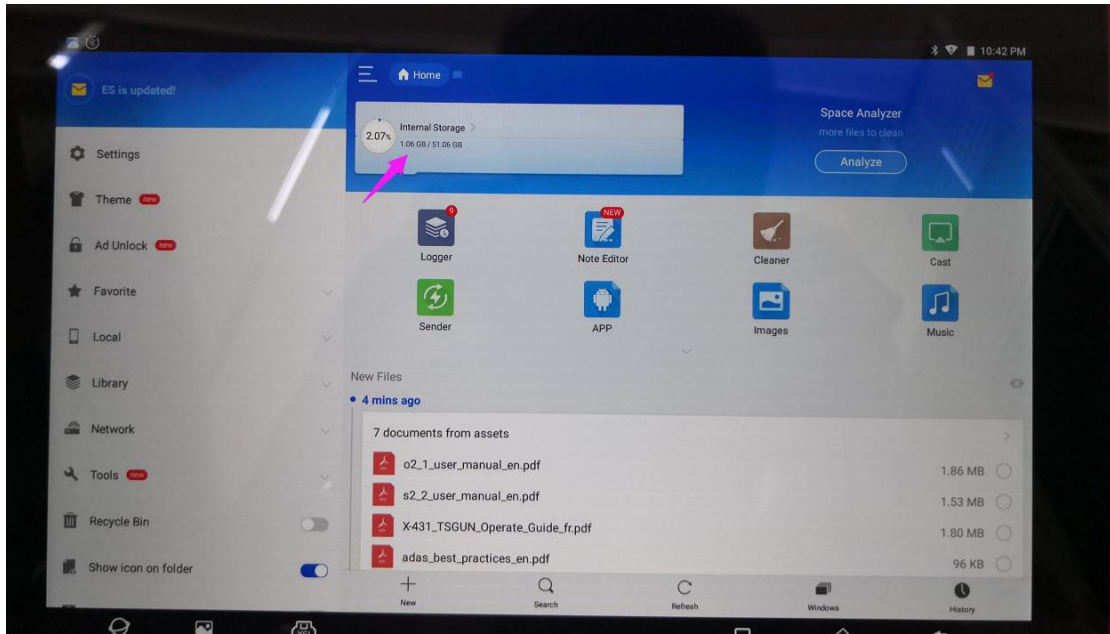
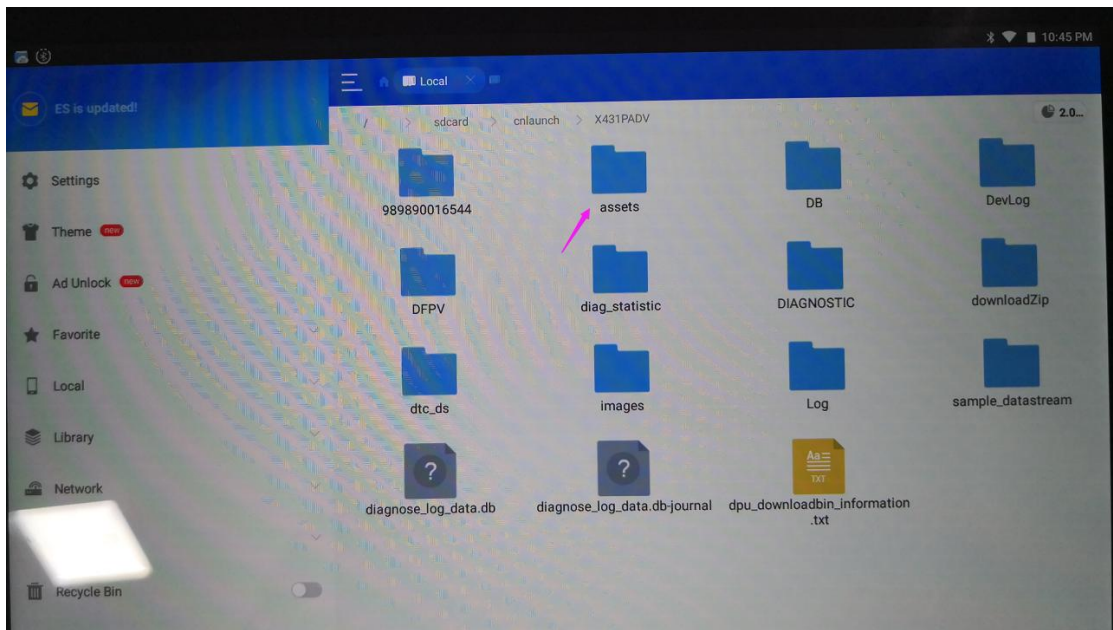
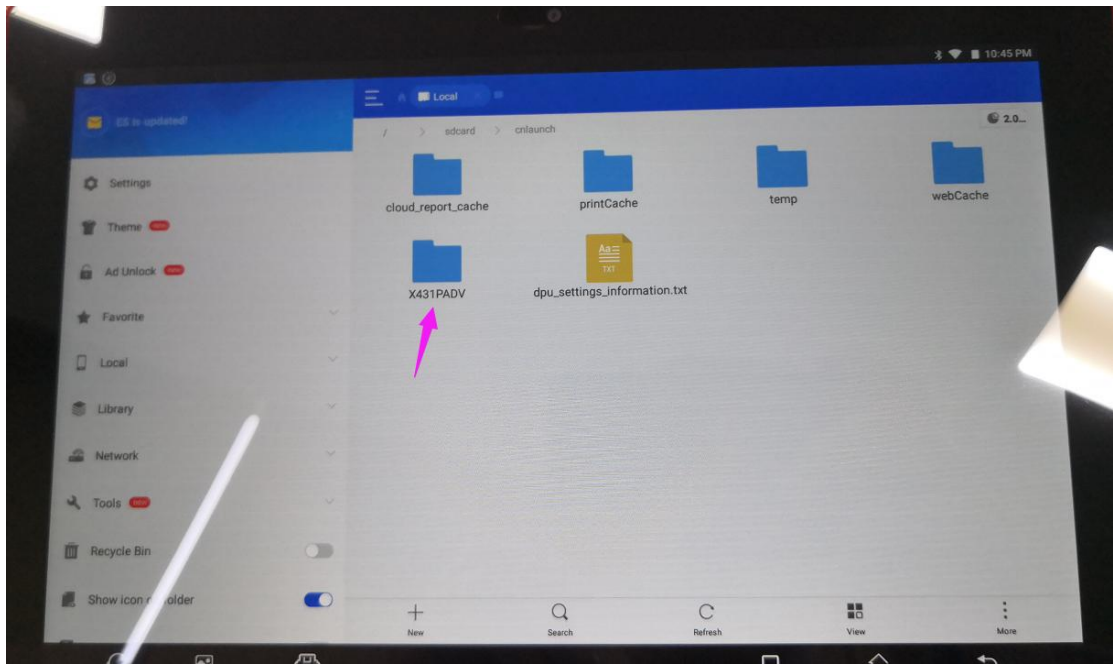


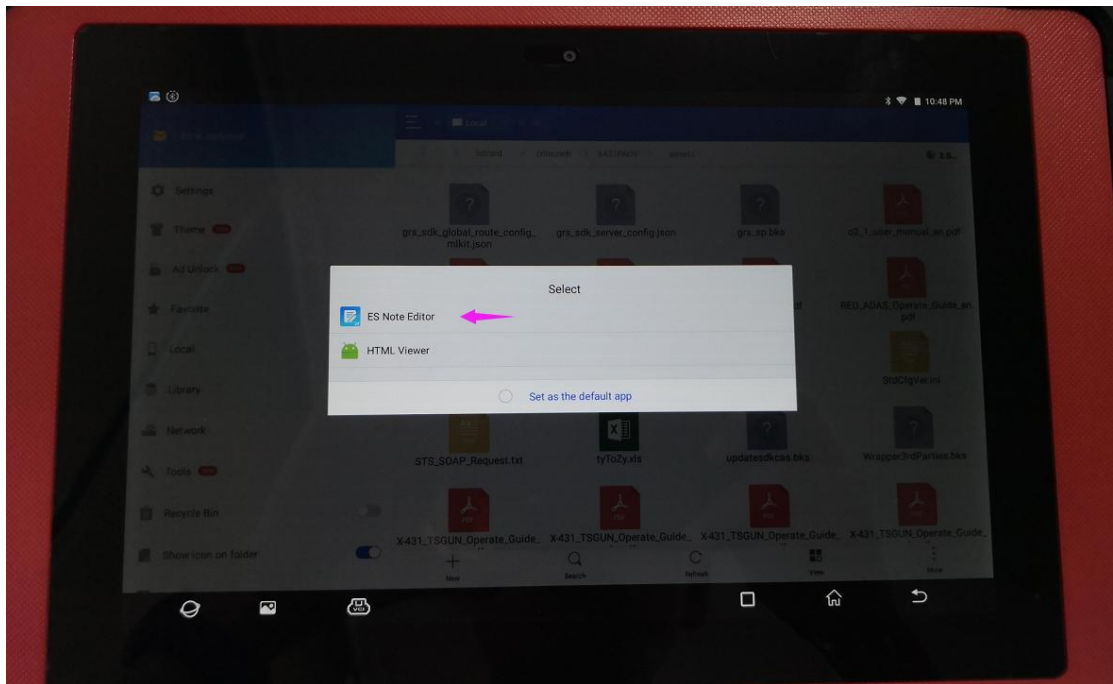
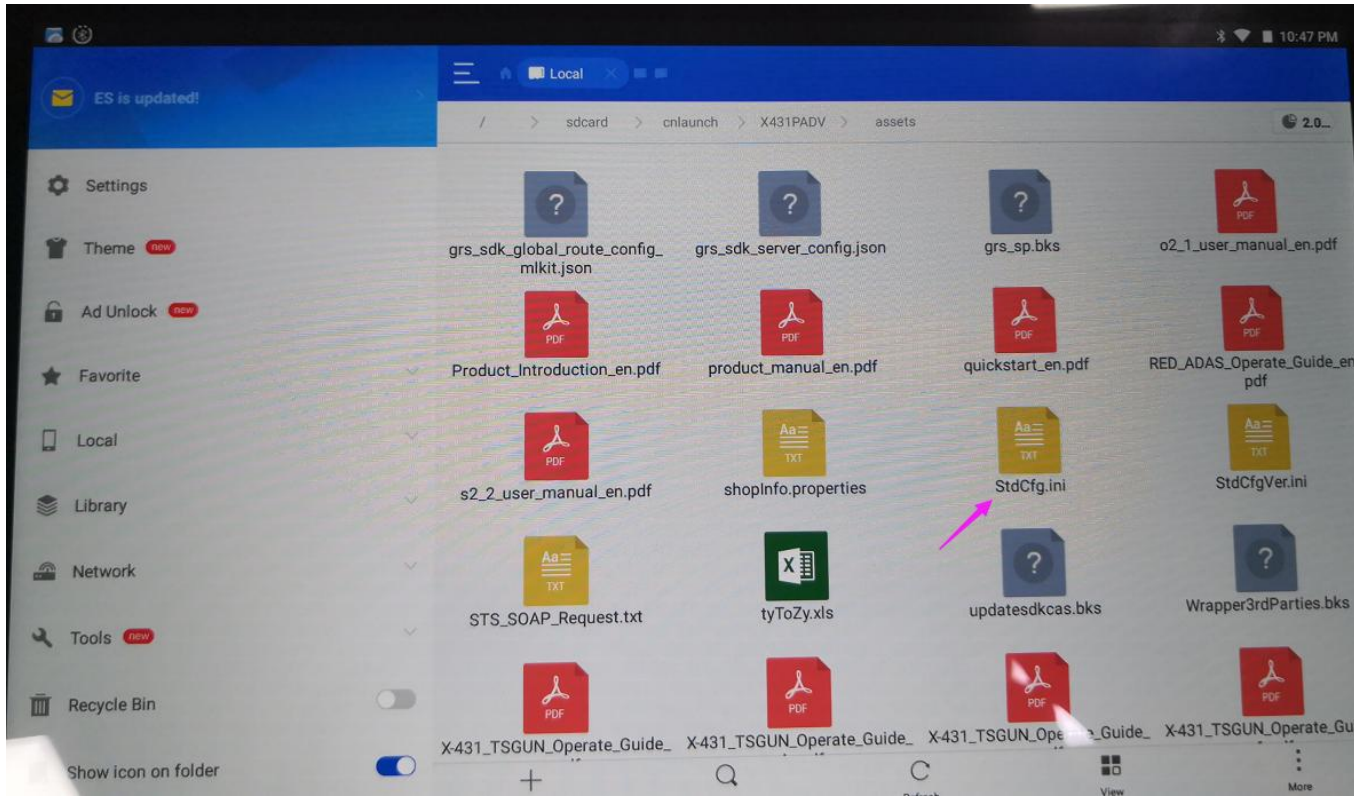
Operation method for configuring online programming function:

Go to other - Equipment - file management - cnlaunch folder - x431padv - assets directory and find the file named stdcfg.ini







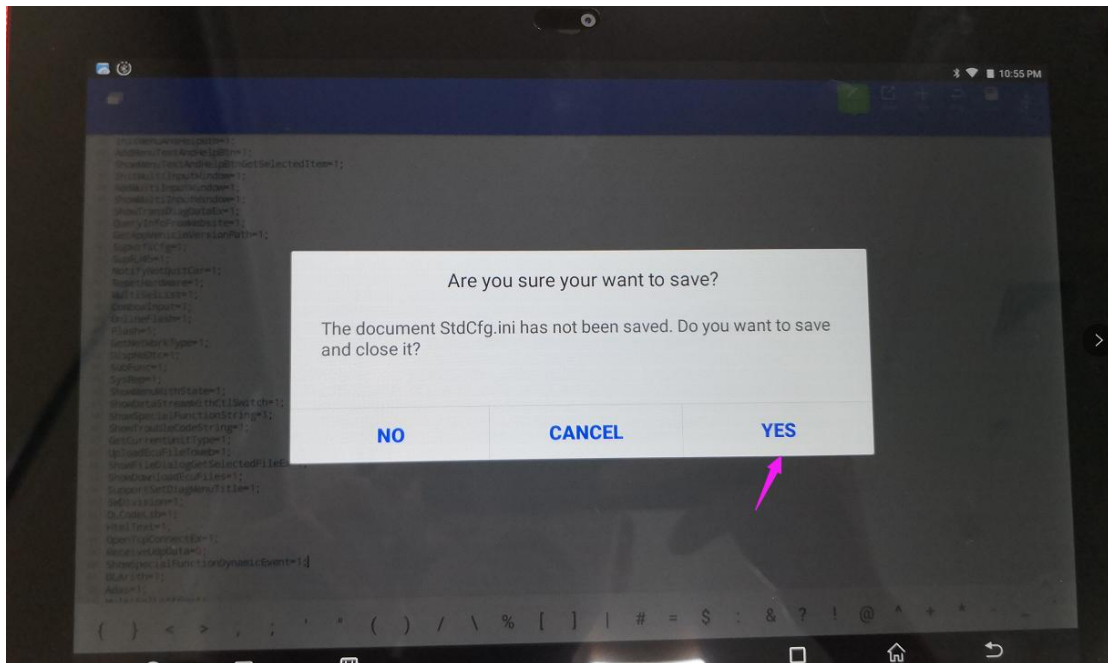


```
10:53 PM
AddCustomMessageBox=1;
ShowCustomMessageBox=1;
InitTroubleCodeExReturn=1;
AddTroubleCodeExReturn=1;
ShowTroubleCodeExReturn=1;
CallServiceAlgorithmBase=1;
ShowDtcHelp=1;
ShowFunctionHelp=1;
Download ecu file=1;
InitMenuAndHelpBtnID=1;
AddMenuAndHelpBtnTextID=1;
ShowMenuAndHelpBtnGetSelectedItem=1;
InitMenuAndHelpBtn=1;
AddMenuTextAndHelpBtn=1;
ShowMenuTextAndHelpBtnGetSelectedItem=1;
InitMultiInputWindow=1;
AddMultiInputWindow=1;
ShowMultiInputWindow=1;
ShowTransDiagDataEx=1;
QueryInfoFromWebsite=1;
GetAppVehicleVersionPath=1;
SupR45=1;
SupR45=1;
NotifyNotQuitCar=1;
ResetHardware=1;
MultiSelList=1;
ComboInput=1;
OnlineFlash=0;
Flash=0;
GetNetworkType=1;
DispNoDtc=1;
SubFunc=1;
SysRep=1;
ShowMenuWithState=1;
ShowDataStreamWithCtlSwitch=1;
ShowSpecialFunctionString=1;
ShowTroubleCodeString=1;
GetCurrentUnitType=1;
UploadEcuFileToWeb=1;
ShowFileDialogGetSelectedFileEx=1;
ShowDownloadEcuFiles=1;
SupportSetDiagMenuTitle=1;
C:\Program Files\...

{ } < > , ; ' " ( ) / \ % [ ] | # = $ : & ? ! @ ^ + * -
```

```
10:55 PM
InitMenuAndHelpBtn=1;
AddMenuTextAndHelpBtn=1;
ShowMenuTextAndHelpBtnGetSelectedItem=1;
InitMultiInputWindow=1;
AddMultiInputWindow=1;
ShowMultiInputWindow=1;
ShowTransDiagDataEx=1;
QueryInfoFromWebsite=1;
GetAppVehicleVersionPath=1;
SupR45=1;
SupR45=1;
NotifyNotQuitCar=1;
ResetHardware=1;
MultiSelList=1;
ComboInput=1;
OnlineFlash=1;
Flash=1;
GetNetworkType=1;
DispNoDtc=1;
SubFunc=1;
SysRep=1;
ShowMenuWithState=1;
ShowDataStreamWithCtlSwitch=1;
ShowSpecialFunctionString=1;
ShowTroubleCodeString=1;
GetCurrentUnitType=1;
UploadEcuFileToWeb=1;
ShowFileDialogGetSelectedFileEx=1;
ShowDownloadEcuFiles=1;
SupportSetDiagMenuTitle=1;
SwDivision=1;
OLCodeLib=1;
HtmlText=1;
OpenTcpConnectEx=1;
ReceiveUpData=0;
ShowSpecialFunctionDynamicEvent=1;
OLArith=1;
Adas=1;
M...

{ } < > , ; ' " ( ) / \ % [ ] | # = $ : & ? ! @ ^ + * -
```



Open stdcfg.ini with a text editor, click the Edit button at the top right to make the file in the editing state, find the onlineflash and flash fields, the default value is 0, which means that the diagnostic software does not support online programming, click the corresponding field, change the value to 1, and then save. After saving successfully, the corresponding value will change to 1, as shown in the circle below, indicating that the diagnostic software can support the online programming function

